

Fitting Guide

toffs
sliding doors



design
unlimited

HOW TO ORDER SLIDING DOORS

Using our carcasses

We will match doors to the number and size of your carcasses. We allow for track and door overlaps.

Please use the order form to provide:

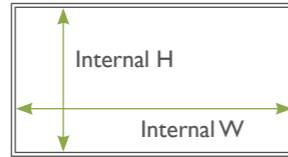
1. Door frame design and colour
2. Panel materials (with codes) and design

Ordering doors and front frame or doors only

We need your finished internal aperture size.

This is the size after you have made allowances for your scribes and plinths.

Please provide a diagram of all doors with wood/glass codes.



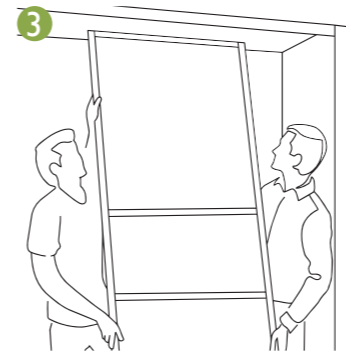
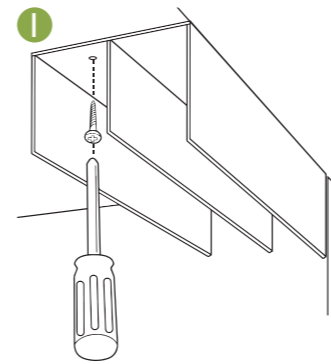
Ordering Example

Frame Venice, Satin Silver

Door 1	Door 2	Door 3
Cascina Pine	Silver Mirror	Cascina Pine
Silver Mirror		Silver Mirror
Cascina Pine		Cascina Pine

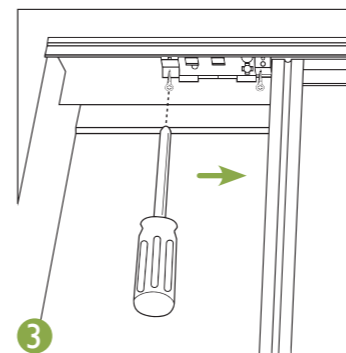
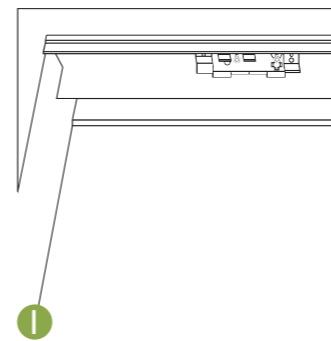
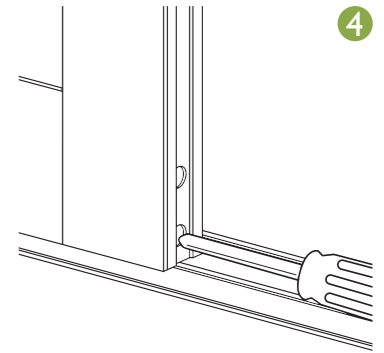
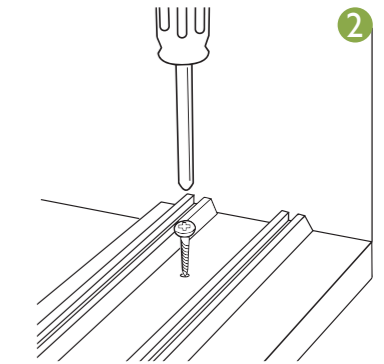
Please provide all glass and wood codes





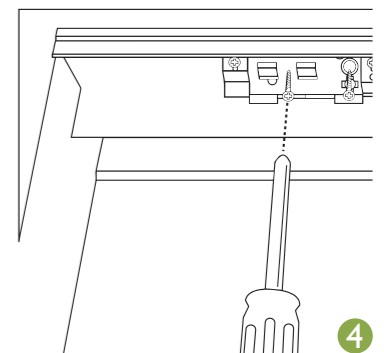
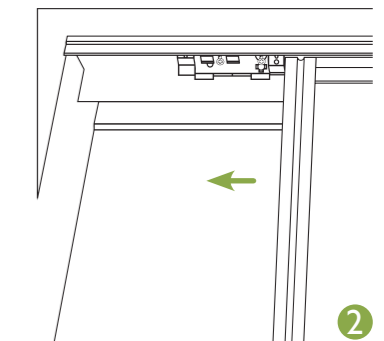
FITTING A TOFFS SLIDING DOOR

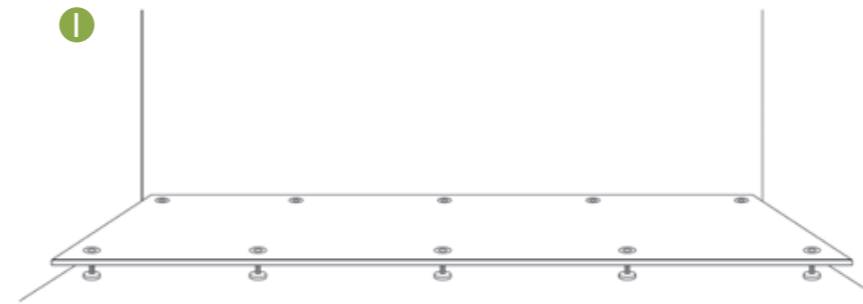
1. Screw top track into place flush with front of wardrobe frame.
2. Screw bottom track into place 9mm back from front edge of wardrobe frame.
3. Fitting the rear door first, lift the door into the top track at a slight angle before guiding the bottom wheels into the bottom track. The wheels need to be push up into the base of the doors to do this, as they are fitted with a spring.
4. The door height can be adjusted using a screwdriver.



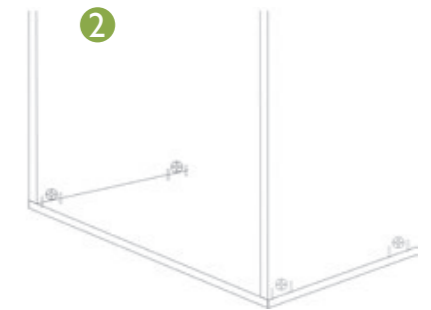
FITTING A TOFFS SOFT CLOSE

1. Place the soft close plate into the top track ensuring the individual peg is facing the door.
2. Close the door fully. This will push the soft close plate into the correct position within the track. If the plate does not meet the soft close on the door, adjust the door height using the adjustment screws at the bottom of the door.
3. Open the door and screw the plate securely in place.
4. Fine height adjustments can be made using the adjustment screw in the centre of the plate.

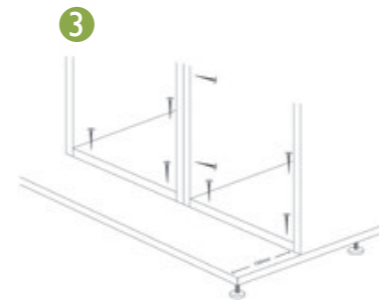




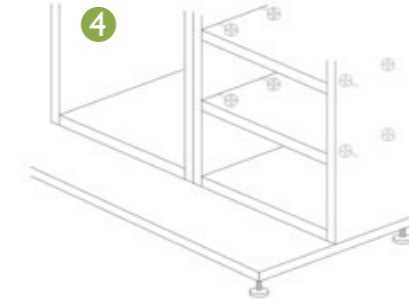
1 Screw legs into base, place base into required space and level accordingly. NB: Additional packing may be required under legs for very uneven floors.



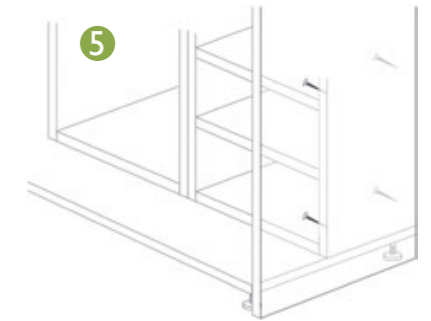
2 Assemble all internal carcasses using pre-drilled cam and dowel assemblies.



3 Align carcasses to the rear of the base. Drill and screw carcasses to the base and to each other.



4 Assemble internal shelves, shelf stacks, drawer units and hanging rails using pre-drilled hole and cam and dowel assemblies.



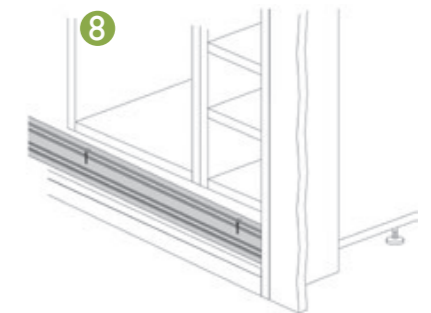
5 Scribe end panel into the back wall and ceiling. Fit top extender. Drill through and screw from internal carcass to fix securely.



6 For wall-to-wall installations an end panel is not required. Fit the extender panels flush to the front of the base and fix by drilling through and screwing.

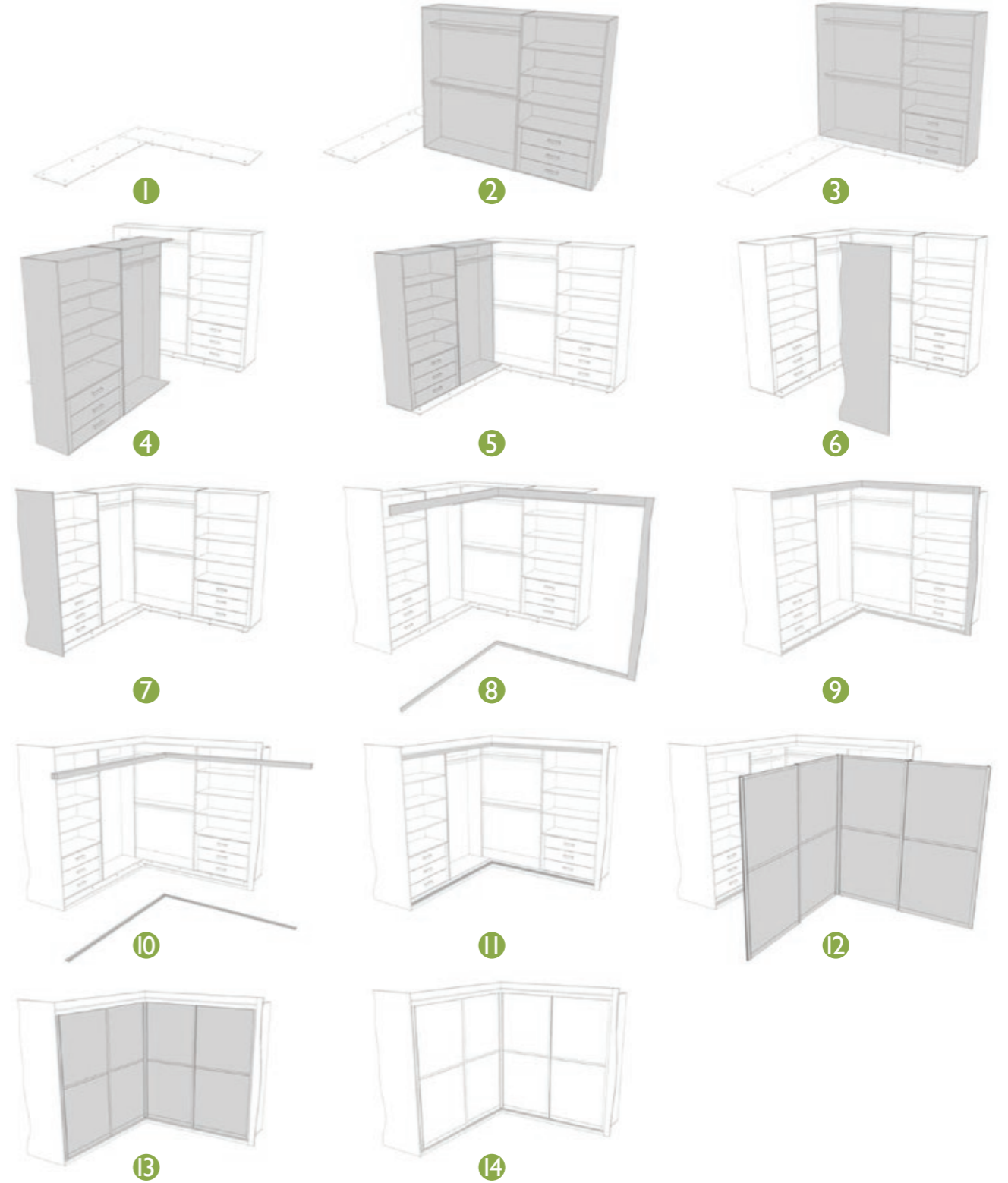
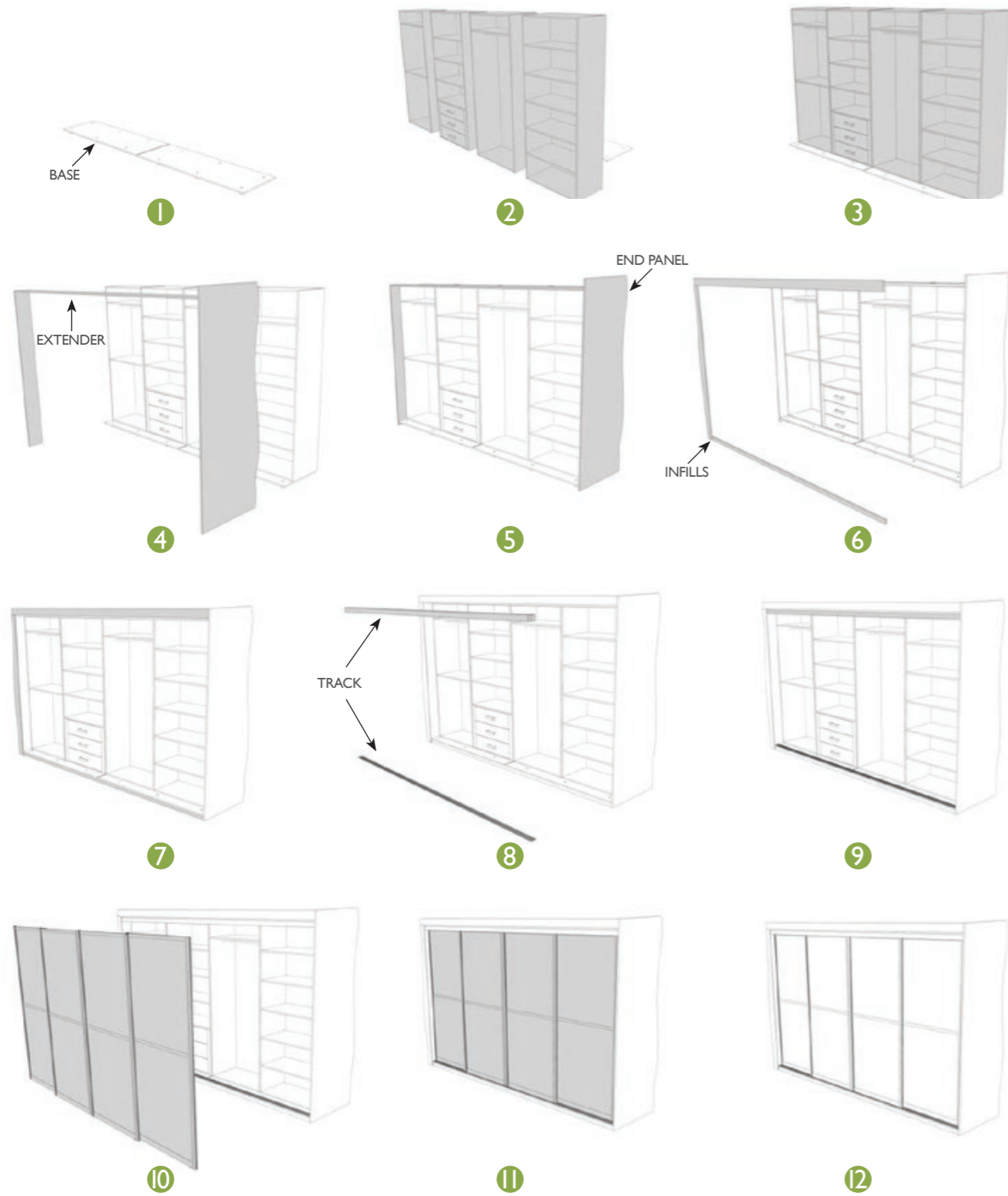


7 Scribe fillers to walls where required, to floor and to ceiling.



8 Fit top track flush to top extender by drilling and screwing. Bottom track is set back 9mm* from the front edge of the base.

* Heritage track is set back 13mm





Design Unlimited.
The only limit is...
your imagination

35

We are a family business,
established in 1985 and
trading for over 35 years



All our bespoke fitted
furniture is manufactured
in our factory in Yorkshire

toffs
sliding doors

☎ 01226 387525 🌐 toffsslidingdoors.co.uk

✉ info@toffsslidingdoors.co.uk

Unit 1c Metro Trading Centre, Barugh Green Road, Barnsley S75 1JT

TERMS & CONDITIONS: Please visit our website www.toffsslidingdoors.co.uk for full terms and conditions.

